

## Sample the Stain Before You Buy

Proper sampling is where it starts. Sampling is critical because the same stain can look very different on various species of wood, as demonstrated by the color samples in this brochure. Different prep and application methods also affect the final result. Therefore, sampling is the only way to make sure you get the color you want the first time.

Sampling is easy: on a small, inconspicuous test area (we recommend a minimum 2 sq. ft. space), simply do each step the way you will on all your siding and trim.

- Prep the wood.
- Apply the stain.
- Let the stain dry (both between coats and after all coats have been applied).
- If working with a contractor, don't allow the contractor to stain until you have thoroughly discussed and demonstrated the look you want. Show him/her the sample.
- Don't stain all of the siding and trim before you verify that you're achieving the look you want. It is best if you can be on-site during the staining process.

For more information on proper prep and application methods, visit our website at [www.sashco.com](http://www.sashco.com) or scan the Tag on this brochure to access it from your smart phone.

*The siding is stained and ready to go . . . It's all coming together.*

*Hand-dipped shingles in progress being stained with Transformation Stain<sup>®</sup>. Color: Gold Tone Medium*

## Stain your Siding, Accent your Trim

Let Transformation Siding & Trim inspire your creativity. Stain your siding one color and the trim another to create a beautiful accent. Or get even more creative by mixing different colors to create your own custom color\*! The options are endless, but here are a few combinations that work well together:

Siding	Trim
Redwood	Red Tone Medium
Natural	Redwood
Cedar	Redwood
Brown Tone Medium	Natural

*\*Sample first before you stain the whole house!*

## Transformation Stain Siding & Trim on Wood Species

The color samples shown are an approximation of how Transformation Siding & Trim will look on your siding or trim. The color may vary based on the species, texture and porosity of wood as well as the application technique. Test the stain on an inconspicuous area to make sure you get the color you want.

	Cedar Shingles	Cedar	Pine
Natural			
Cedar			
Gold Tone Medium			
Red Tone Medium			
Brown Tone Medium			
Redwood			

No Peel  
Formula\*.  
It's truly...  
"A Better Way  
to Stain".

## A Better Way to Stain

### Reality check:

When applied incorrectly, a high quality stain will give you the same results as a low quality stain.

At Sashco, we want to help you avoid that pitfall. Sashco's Transformation Siding & Trim is the quality product you're looking for, bundled with the support and education necessary to do it right the first time. It's what we call "A Better Way to Stain." The result is beautiful siding and trim you can enjoy for years to come.

### Sampling

To get the look you want, sample the stain on your wood.

### Prep

Proper prep starts you down the right path.

### Application

Proper application of a quality stain ensures long-term performance.

### Routine Maintenance

Reduce long-term costs, time and effort.

*Note: For detailed prep, application and maintenance info visit [www.sashco.com](http://www.sashco.com)*

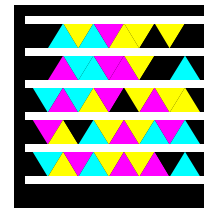


## Why Transformation Stain Siding & Trim?

- **No Peel Formula\***: The only thing worse than peeling stain is the sight of it. Transformation Siding & Trim will not peel.
- **Shows the Wood Grain**: Wood is beautiful. So why hide it?
- **Easy Water Clean-up**: Since it's water-based, water is all that's necessary to clean up wet stain.
- **Superb Color Portfolio, Matte Finish**: Rich colors combine with a matte finish to give the wood a beautiful natural look.
- **Easy to Choose**: For Siding & Trim. No confusing names or convoluted labels.

*\*When applied correctly & maintained (3-4 years on siding & trim).*

Watch Helpful How-To Videos  
Chat Live • Search FAQs  
[www.sashco.com](http://www.sashco.com)



Speak with Stain Experts  
Mon-Fri, 6 a.m. – 5 p.m. MST  
**1-800-767-5656**



10300 E. 107th Place • Brighton, CO 80601  
1-800-767-5656 • [www.sashco.com](http://www.sashco.com)

TRW 005 1-12

Siding & Trim

Transformation  
Stain®  
Restore the Wood Nature Destroyed

