

First Aid

Refer to the MSDS (Material Safety Data Sheet) as needed.

EYES: Immediately flush with large quantities of water for at least 15 minutes. If irritation persists, see a medical doctor.

SKIN: Wash with soap and water and rinse thoroughly. Wash contaminated clothing before use.

INHALATION: Remove to fresh air.

INGESTION: If large quantities are swallowed,

DO NOT INDUCE VOMITING - seek medical help.

WARNING!

May be harmful if inhaled or swallowed. Avoid contact with eyes and skin.

Keep out of reach of children!

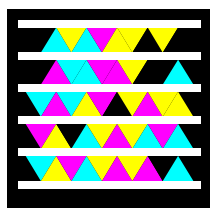
If you scrape, sand, or remove old paint, you may release lead dust. **LEAD IS TOXIC. EXPOSURE TO LEAD DUST CAN CAUSE SERIOUS ILLNESS, SUCH AS BRAIN DAMAGE, ESPECIALLY IN CHILDREN. PREGNANT WOMEN SHOULD ALSO AVOID EXPOSURE.** Wear a NIOSH-approved respirator to control lead exposure. Clean up carefully with a HEPA vacuum and a wet mop. Before you start, find out how to protect yourself and your family by contacting the National Lead Information Hotline at 1-800-424-LEAD or log on to www.epa.gov/lead.

WARRANTY


Sashco warrants this product will substantially meet published specifications on the date of sale. If it fails to do so, return unused portion with original sales receipt for replacement or refund, at Sashco's sole option. These are purchaser's sole and exclusive remedies for any breach of warranty. Purchaser must determine suitability of product for purchaser's specific needs and assumes all risk associated with its use.

For a detailed description of the warranty and exclusions, please visit our website at www.sashco.com.

Watch Helpful How-To Videos • Chat Live • Search FAQs
www.sashco.com



Speak with Stain Experts
Mon-Fri, 6 a.m. - 5 p.m. MST
1-800-767-5656

 **sashco**
Products That Work®
10300 E. 107th Place • Brighton, CO 80601
1-800-767-5656 • www.sashco.com

Typical Properties

(Not to be considered specifications)

Colors:

Natural
Cedar
Gold Tone Medium
Red Tone Medium
Brown Tone Medium
Redwood

Packaging: 1 gallon and 5 gallon pails

Usage: Exterior/Interior

Coverage rate:

1st coat: 150-250 sq. ft. per gallon
2nd and Maintenance coats: 250-350 sq. ft. per gallon
(As with all stains, coverage will vary depending upon roughness and porosity of the wood.)

VOCs: < 250g/L

Application Range:

40°F (4°C) and rising to 90°F (32°C) and falling. In severe conditions (under 40°F (4°C) and/or 70%+ humidity), full rain resistance may take longer. Cover surfaces with plastic if rainfall or snowfall is expected within 24 hours after application.

Compatibility:

Transformation Siding & Trim is recommended for use with all Sashco caulking products. Please contact Sashco for details on other specific compatibility questions.

Dry Time:

Dries to the touch in 30 minutes or less in ideal weather.

Viscosity: 50-150 centipoise

pH: 8.5-9.0

Density: 8.3-8.8 lbs./gal.

Solids: 18-22% by weight

Odor: Mild, sweet

Freeze-Thaw: Passes 5 freeze-thaw cycles

The data reported here are believed to be reliable. No warranty is made or implied concerning the accuracy of or the results obtained from their use.



Transformation Stain

Restore the Wood Nature Destroyed

Siding & Trim

- No Peel Formula*
- Shows the Wood Grain
- Water Clean-up
- Matte Finish

A Better Way to Stain

It's about Transformation: old and weathered wood siding brought to life again, or trim stained with color to create the perfect accent.

These are the results stain was made for, yet rarely do we observe this in the real world. We see our neighbors' stain peeling or are reluctant to repair our own siding due to its "big project" nature and the hefty price tag. Contrary to common wisdom, having a great quality stain is only half the battle. The other half is what is neglected the most: routine maintenance. Over time, routine maintenance is truly the key to easy and inexpensive staining.

When applied correctly and maintained every 3-4 years, you can be assured that Transformation Stain Siding & Trim won't peel. This eliminates the time and expense of sanding the surface before applying a maintenance coat. Simply do a light power wash, allow the wood to dry and apply another coat. It's that easy, and you'll find that your "big project" wasn't so big after all.

Use a quality stain like Transformation Siding & Trim and you'll transform the look of your wood. Practice routine maintenance and you'll discover a better way to stain.

For Sashco's complete guide on "A better way to stain," keep reading. You'll find step-by-step instructions on the following key topics:

Sampling

To get the look you want, sample the stain on your wood.

Prep

Proper prep starts you down the right path.

Application

Proper application of a quality stain ensures long-term performance.

Routine Maintenance

Reduce long-term costs, time and effort.

Sampling

Proper sampling is where it starts. It is critical because the same stain can look very different on various species of wood. Different prep and application methods will also affect the final result. Therefore, sampling on your wood is the only way to make sure you get the color you want the first time.

It's easy: on a small, inconspicuous test area (we recommend a minimum 2 sq. ft. space), simply do each step the exact same way you will on all of your siding or trim.

- Prep the wood.
- Apply the stain.
- Let the stain dry (both between coats and after all coats are applied).
- If working with a contractor, don't allow the contractor to stain until you have thoroughly discussed and demonstrated the look you want. Show him/her the sample.
- Don't stain all of your siding or trim before you verify that you're achieving the look you want. It is best if you can be on-site during the staining process.



* When applied correctly & maintained.

INFO SHEET
www.sashco.com • 800-767-5656

Prep

Proper substrate preparation and application mean greater longevity, a better color, and better long-term performance.

- **Make sure it sticks:** If you are changing from one stain product to another, contact us first. Transformation Siding & Trim will adhere to almost any surface that is properly prepped. Be aware that any product already on the wood that contains waxes, non-drying oils, silicones, or anything that forms thick layers on the wood can interfere with the adhesion and penetration of Transformation, or any stain, and must first be removed.

- **Sunny with a chance of more sun:** Plan to stain when the forecast is predicting clear, rain-free weather that will extend 1-2 days after the stain has been applied so the stain can dry properly. If rain can't be avoided, be sure to protect the stain from direct rainfall for 1-2 days after the stain is applied to prevent it from being washed off the surface.

- 1 Cleanliness is a virtue:** Starting with an absolutely clean surface means better penetration and adhesion of the stain, which means better longevity and a more beautiful finish. Power wash or sand wood surfaces using an Osborn® brush or 60–80 grit sand paper to remove all previous stains and loose, unsound gray or yellow wood fibers, along with surface contaminants like pollen, bird droppings, dust, etc. If mildew is present, use diluted bleach to treat and make sure to rinse well. If necessary, use a chemical stripper. (Follow label instructions carefully and ensure wood is back to neutral pH, checking with pH strips.)

- 2 Fuzz be gone:** For the best appearance, remove felting (wood fuzz) with Osborn® brushes, Sashco's Buffy Pad system or 60–80 grit sand paper once the wood is dry. Remove all sawdust with a broom, compressed air or a leaf blower.

- 3 Preserve, please:** If rot could be a problem in your area, apply Sashco's PeneTreat® for protection. Allow wood to dry 1-3 days. (Use that moisture meter to check it!)

- 4 Stay dry:** Use a moisture meter to make sure wood is at or below 19% moisture content level before applying stain. Damp wood can prevent the stain from penetrating properly and can eventually lead to peeling.

- **Don't delay:** UV rays from the sun can damage cleaned wood surfaces in as little as 1 week; therefore, stain should be applied no more than 2 weeks after wood prep is completed.

Osborn® is a trademark of Osborn International.



Orbital Sander



Power Wash

- 1 Remove old stain or unsound wood fibers**



Buffy Pad System



Osborn® Brush

- 2 Remove wood fuzz (splintering or felting)**

- 3 Apply PeneTreat® for protection**



- 4 Make sure the wood is dry**



Routine Maintenance

Everyone knows that a \$30 oil change twice a year beats a \$2,000 mechanic's bill. Routine maintenance on your siding and trim could be the difference between \$300 every 3-4 years or \$5,000 to completely redo the job. It's truly the key to "a better way to stain."

- 1. Cleanliness is still a virtue:** Lightly power wash your wood to remove pollen, bird droppings, dirt and other surface contaminants. If mildew is present, use diluted bleach to treat and make sure to rinse well. Allow the surface to thoroughly dry. (This generally takes 1-2 days in ideal weather. To know for sure, use a moisture meter to check!)

- 2. Spray it again, please:**

- Spray on one maintenance coat of Transformation Stain® Siding & Trim. If only a brush is used, be sure to drench-apply the stain to ensure adequate coverage. Don't skimp.
- Vigorously back brush the stain, pushing it into the wood, catching any drips. This promotes the best adhesion and penetration, and leaves an even, consistent coat of stain.

Application

Proper application of the stain, combined with the prep you've already done, will complete the transformation of your siding and trim.

- 1. Mix it up:** Thoroughly mix the stain. The preferred method is to use a drill-driven, squirrel-cage type mixer. No matter what method is used to mix the stain, you can ensure the most consistent color by:
 - Scraping all pigment off the bottom of the pail and thoroughly mixing it in.
 - Interblending pails with different lot numbers.
 - Stirring the stain every 10-15 minutes throughout application to keep the pigments evenly distributed through the stain.

- 2. Say no to mildew:** Help keep surface mold and mildew at bay by adding extra mildewcides to the stain. We recommend Stay Clean I/E.

- 3. Warm feelings:** Apply Transformation to wood surfaces that are no colder than 40°F (4°C) and no hotter than 90°F (32°C). Extreme temperatures will prevent proper penetration and drying of the stain. Plan your work so that surface temperatures fall within this range. Do not apply to surfaces in direct intense sunlight and work in sections to avoid lap marks.

- 4. Spray it again, please:**

- Spray on one heavy coat of Transformation Siding & Trim. If only a brush is used, be sure to drench-apply the stain to ensure adequate coverage. Don't skimp.

- Vigorously back brush the stain, pushing it into the wood, catching any drips. This promotes the best adhesion and penetration, and leaves an even, consistent coat of stain.

- Wait until the first coat is dry (approx. 12-24 hours), then apply a second coat of stain, spraying and back brushing as with the first coat.

- 5. Bask in it:** Enjoy your beautiful wood home.

- 1 Mix the stain**



- 2 Optional: add mildewcide**



- 3 Surface temperature 40° - 90°F**



- 4a Apply stain by stain pad, spraying, or rolling**



- 4b Back-brush stain into the wood**

Clean-up

While still wet, clean tools and equipment with water. Once dry, mineral spirits will be required on tools and equipment. Use citrus-based hand cleaners for any product that dries on skin.

Storage

Tightly reseal opened containers and store at temperatures between 50°F and 90°F (10°C - 32°C)